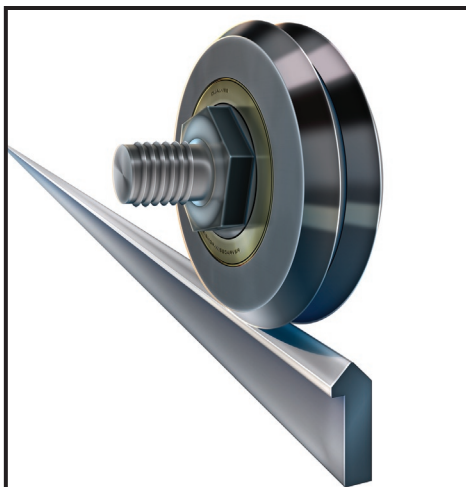


Maximize up time with DualVee®

Originally designed for harsh environment applications where existing technologies were ineffective, DualVee excels in extreme conditions. The vee design creates a velocity gradient, which results in a constant sweeping action that cleans debris from the track.

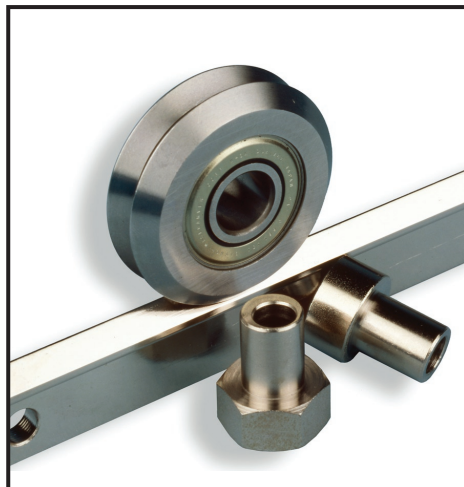
DualVee's bearing elements are completely sealed and isolated from the environment. Grease is not under attack from constant exposure to water or contaminants, which can cause early failure in exposed bearings, making DualVee a durable and reliable choice for this demanding industry.

- Longer life keeps equipment up and running
- Install or replace in minutes
- Speeds to 5.5 m/s
- Acceleration to 5 g's
- Tolerant of temperatures as cold as -20° C
- High temperature and clean room options available
- Self-cleaning action sweeps debris from the track
- High accuracy and repeatability
- Can run completely dry (no grease); FDA approved grease available, or specify your own



DualVee Integral Wheels

- One piece construction with machined inner bearing race
- Lower profile
- Increased rigidity; up to 84% less deflection
- Lower overall costs
- Easy installation
- External adjustment and tightening
- Reduced tolerance stack up
- Larger diameter fasteners; up to 25% greater torque capability
- 440C stainless steel, carbon steel or polymer



Original DualVee Wheels

- Six standard sizes from 15-75mm (.58 - 3 in.)
- 440C stainless steel or 52100 carbon steel
- Stainless steel wheel is both sealed and shielded for added protection from water and debris
- Bushings available in electroless nickel plated or 303 stainless steel
- Journals are 303 stainless steel



DualVee Track

- Patented mounting shoulder provides easy installation
- 420 stainless steel or 1045 carbon steel from stock
- Ground track Ra 0.2 to 0.4mm (N4-N5 finish) to enhance corrosion resistance of stainless steel track
- Induction hardened or "as formed"
- Drilled or un-drilled
- Custom plating options include black oxide, thin dense chrome, electroless nickel, or zinc
- Easily joined for long length applications

A wide range of DualVee accessories is available, including track plate assemblies, wheel plate assemblies, lubricator assemblies and wheel cover assemblies.

BISHOPWISECARVER®

2104 Martin Way, Pittsburg, CA 94565
888.580.8272 or 925.439.8272

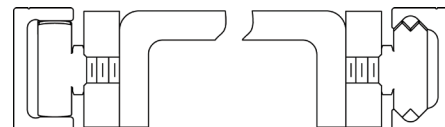
www.bwc.com

UtiliTrak®

The UtiliTrak linear guide is designed primarily for transport applications where low cost, easy installation and minimal maintenance are primary design objectives.

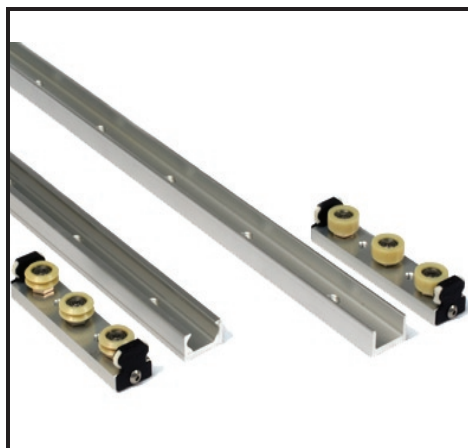
Constructed with proven DualVee Motion Technology®, UtiliTrak offers high reliability and smooth motion in a sleek, compact design.

UtiliTrak is ideal for mounting two systems in parallel, as shown here. The vee side serves as the motion guide, while the crown roller side compensates for mounting errors. UtiliTrak does not require precise parallelism for accurate operation.



Open Channel

Vee Channel



PW Series



CR Series



SW Series

- Low cost, lightweight, corrosion resistant linear slide
- One piece 6063-T6 aluminum alloy channel
- Polymer overmoulded stainless steel DualVee wheels and MadeWell® crown rollers
- Built-in wiper caps
- Loads to 311N
- Speeds to 1.5 m/s

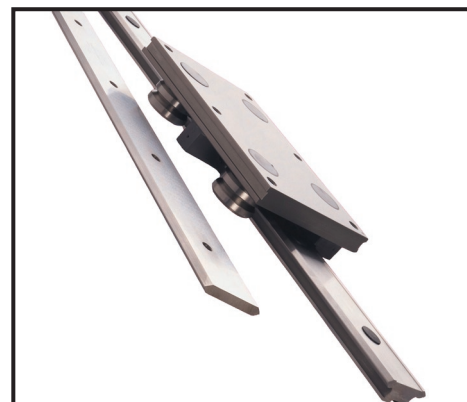
- High load, corrosion resistant linear slide
- Induction treated 420 stainless steel DualVee track mounted to an extruded aluminum channel
- 440C stainless steel DualVee wheels
- Stainless steel stamped felt lubricator
- Loads to 5,739N
- Speeds to 5.5 m/s

- High load linear slide for applications where corrosion resistance is not required
- One piece ground carbon steel channel
- Steel DualVee wheels and MadeWell crown rollers
- Sealed or shielded
- Loads to 14,040N
- Speeds to 5.5 m/s

SL2

SL2 is a completely corrosion resistant linear guide featuring ground stainless steel slides and linear motion bearings. SL2 carriages are made from strong, yet light-weight aluminum alloy.

- Slide lengths up to 4 meters in a single piece
- Clean room compatible
- Available as assembled units or as components
- Plastic plugs can be added to eliminate dirt traps
- A wide range of SL2 accessories is available



HepcoMotion® SL2