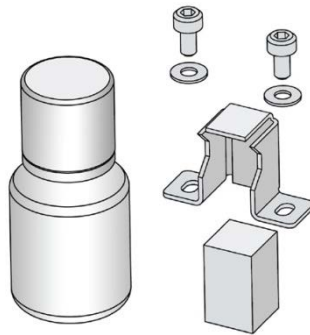


January 17th 2014: PRODUCT STATUS NOTIFICATION – DualVee® Track Lubricators

Bishop-Wisecarver Corporation is informing you of the obsolescence of several components from the DualVee® product line.

DualVee® track lubricator kits were designed for use on two sizes of LoPro® carriages and contained screws and washers for assembly onto both size versions. This configuration caused every end user to discard unused screws and washers which do not fit their applications. To avoid confusion, new stock codes were created with new bills of materials containing only the fasteners needed for each application. New stock codes are available for each specific size.



Upon depletion of inventory the following products will be obsolete and replaced with new alternate stock codes:

Product Line	Obsolete Stock Codes		Replacement Stock Codes	
	Stock Code	Used With	Stock Code	Used With
DualVee	TL12A	Standard Profile Bushing - Size 1 & 2	TL1A	Standard Profile Bushing - Size 1
			TL2A	Standard Profile Bushing - Size 2
	TL34A	Standard Profile Bushing - Size 3 & 4	TL3A	Standard Profile Bushing - Size 3
			TL4A	Standard Profile Bushing - Size 4
	TL12LPA	Low Profile Bushings - Size 1 & 2	TL1LPA	Low Profile Bushing - Size 1
			TL2LPA	Low Profile Bushing - Size 2
	TL34A	Low Profile Bushings - Size 3 & 4	TL3LPA	Low Profile Bushing - Size 3
			TL4LPA	Low Profile Bushing - Size 4
	TL12BWPA	SWS and SWI Wheels - Size 1 & 2	TL1BWPA	SWS and SWI Wheels - Size 1
			TL2BWPA	SWS and SWI Wheels - Size 2
	TL34BWPA	SWS and SWI Wheels - Size 3 & 4	TL3BWPA	SWS and SWI Wheels - Size 3
			TL4BWPA	SWS and SWI Wheels - Size 4

Existing prices are applied to the new stock codes without increase.

**Questions? Please contact your local representative or
Bishop-Wisecarver Corporation customer service at 1.888.580.8272**